

5.02 Icon Legend

-  - Open Space and Parks District
-  - Conservation Agricultural District
-  - Agricultural District
-  - High Intensity Agricultural District
-  - Agricultural Business District
-  - Rural Estate District
-  - Low Density Residential District
-  - Medium Density Residential District
-  - Village Residential District
-  - Multiple-family Residential District
-  - Multiple-family Residential District
-  - Manufactured Home Park District
-  - Institutional District
-  - Village Commercial District
-  - Neighborhood Commercial District
-  - General Commercial District
-  - Highway Commercial District
-  - Industrial/Business Park District
-  - Low Intensity Industrial District
-  - High Intensity Industrial District
-  - High Impact District
-  - Airport, Non-Municipal District
-  - Airport, Municipal District
-  - Airport Commercial District

DeKalb County Zoning Map - Butler & S Keyser Twp

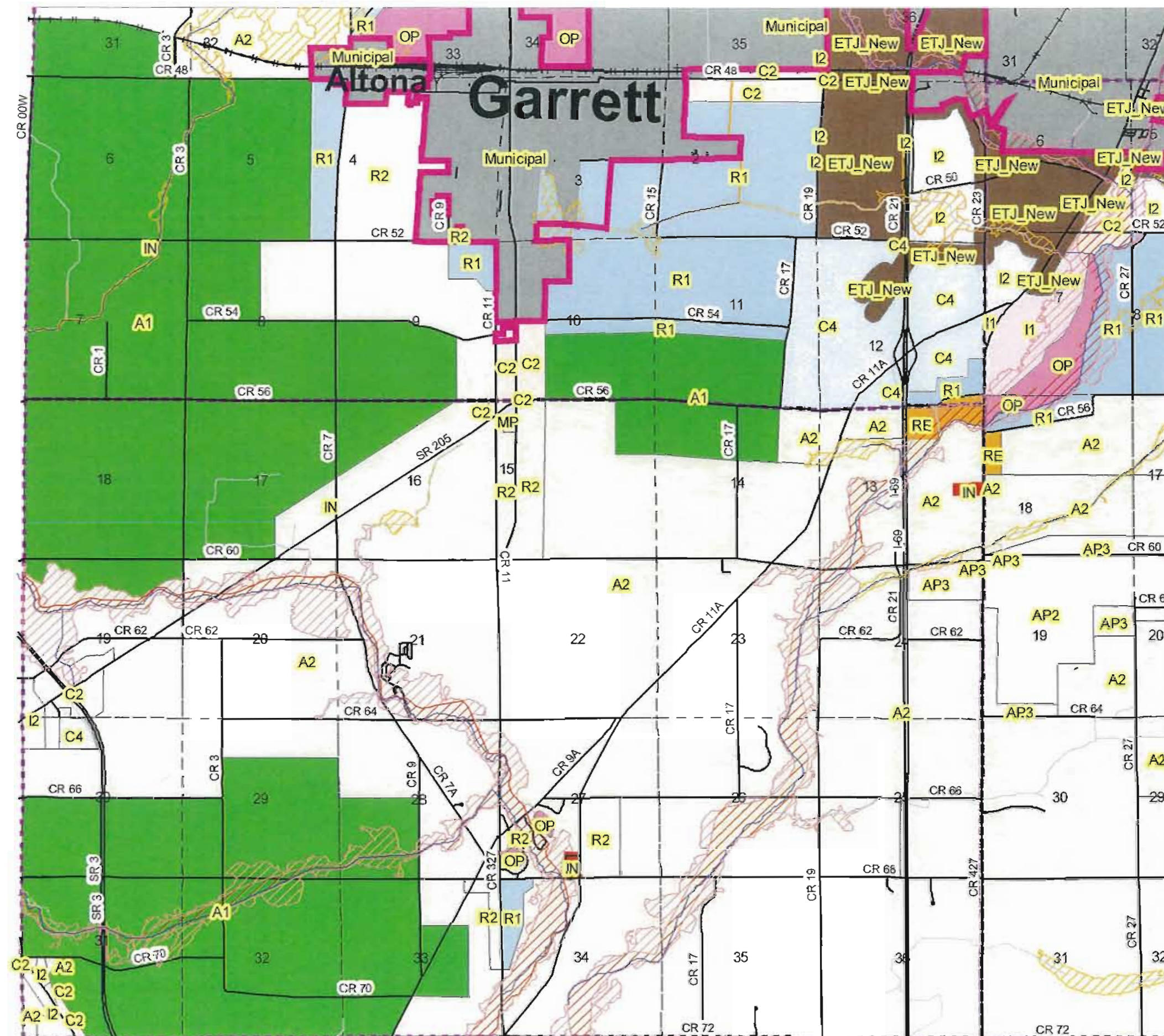
This paper map is for reference purposes only. The Official Zoning Map is located on the County's GIS and is maintained by the DeKalb County Plan Commission as per the Unified Development Ordinance.



0 3,500
Feet

Map Authored by Brad Stump
DeKalb County GIS Department

Map Completed 11/17/2008



Zoning			
A1		Corporate Limits	
A2		Civil Townships Boundary	
A3		Alley	
A4		Road	
AP1		Railroad Track	
AP2		PLSS First Divisions	
AP3		Small Stream/Creek	
C1		River/Waterbody Centerline	
C2		Special Flood Hazard Area - By Zone & Floodway	
C3		Flood Zone of Floodway/Flood Fringe	
C4		AE, Floodway	
ETJ_New		AE, Flood Fringe	
ETJ_Old		A, No FW or BFE Determined	
Hi			
I1			
I2			
I3			
IN			
M1			
M2			
MP			
Municipal			
OP			
R1			
R2			
R3			
RE			

CoCiGIS
DeKalb ~ Auburn ~ Butler ~ Garrett

Document Disclaimer: CoCiGIS and/or its partnering agencies do not warrant or make any representations as to the quality, content, accuracy, or completeness of the information, text, graphics, links and other items contained in this document. The information and materials contained on this document have been compiled from a variety of sources and, as such, are subject to change without notice. In no event will CoCiGIS and/or its partnering agencies, or their officers, agents or employees, be liable for any damages, whether direct, indirect, general, consequential, incidental, exemplary or special arising from the use of information provided on this document. For more information, visit the CoCiGIS website at <http://www.auburn.us/coicgis>.

DeKalb County Zoning Map - Grant & Union Twp

This paper map is for reference purposes only. The Official Zoning Map is located on the County's GIS and is maintained by the DeKalb County Plan Commission as per the Unified Development Ordinance.



0 3,500
Feet

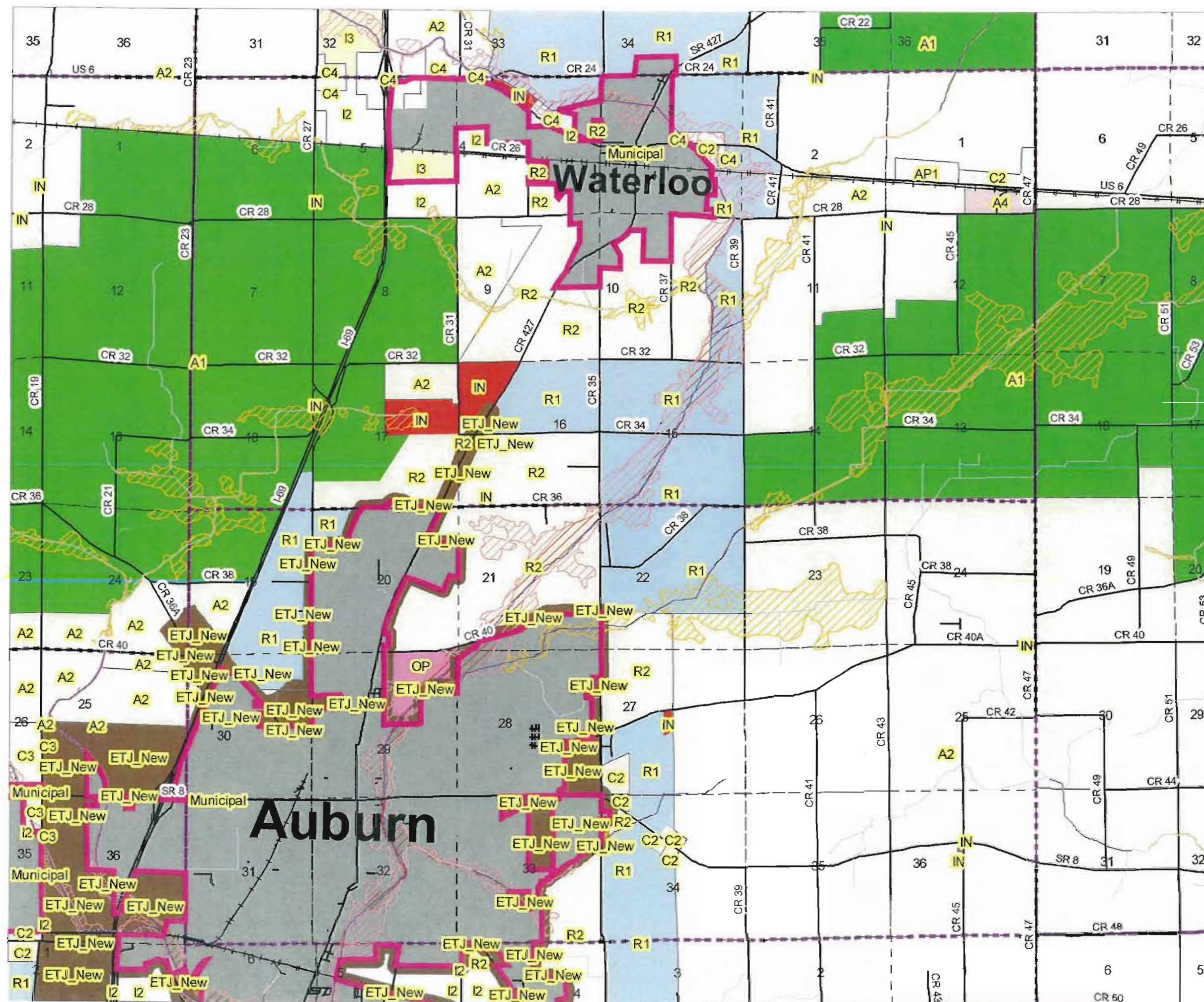
Map Authored by Brad Stump
DeKalb County GIS Department

Map Compiled 11/17/2008

- | | |
|---------------|---|
| Zoning | Corporate Limits |
| A1 | Civil Townships Boundary |
| A2 | Alley |
| A3 | Road |
| A4 | Railroad Track |
| AP1 | PLSS First Divisions |
| AP2 | Small Stream/Creek |
| AP3 | River/Waterbody Centerline |
| C1 | Special Flood Hazard Area - By Zone & Floodway |
| C2 | Flood Zone w/ Floodway/Flood Fringe |
| C3 | AE, Floodway |
| C4 | AE, Flood Fringe |
| ETJ_New | A, No FW or BFE Determined |
| ETJ_Old | |
| Hi | |
| I1 | |
| I2 | |
| I3 | |
| IN | |
| M1 | |
| M2 | |
| MP | |
| Municipal | |
| OP | |
| R1 | |
| R2 | |
| R3 | |
| RE | |

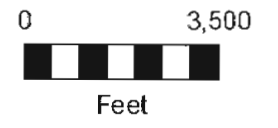
CoCiGIS
DeKalb - Auburn - Butler - Garrett

Document Disclaimer: CoCiGIS and/or its partnering agencies do not warrant or make any representations as to the quality, content, accuracy, or completeness of the information, text, graphics, links and other items contained on this document. The information and materials contained on this document have been compiled from a variety of sources and, as such, are subject to change without notice. In no event will CoCiGIS and/or its partnering agencies, or their officers, agents or employees, be liable for any damages, whether direct, indirect, general, consequential, incidental, exemplary or special arising from the use of information provided on this document. For more information, visit the CoCiGIS website at <http://www.ci.auburn.in.us/coicgis>

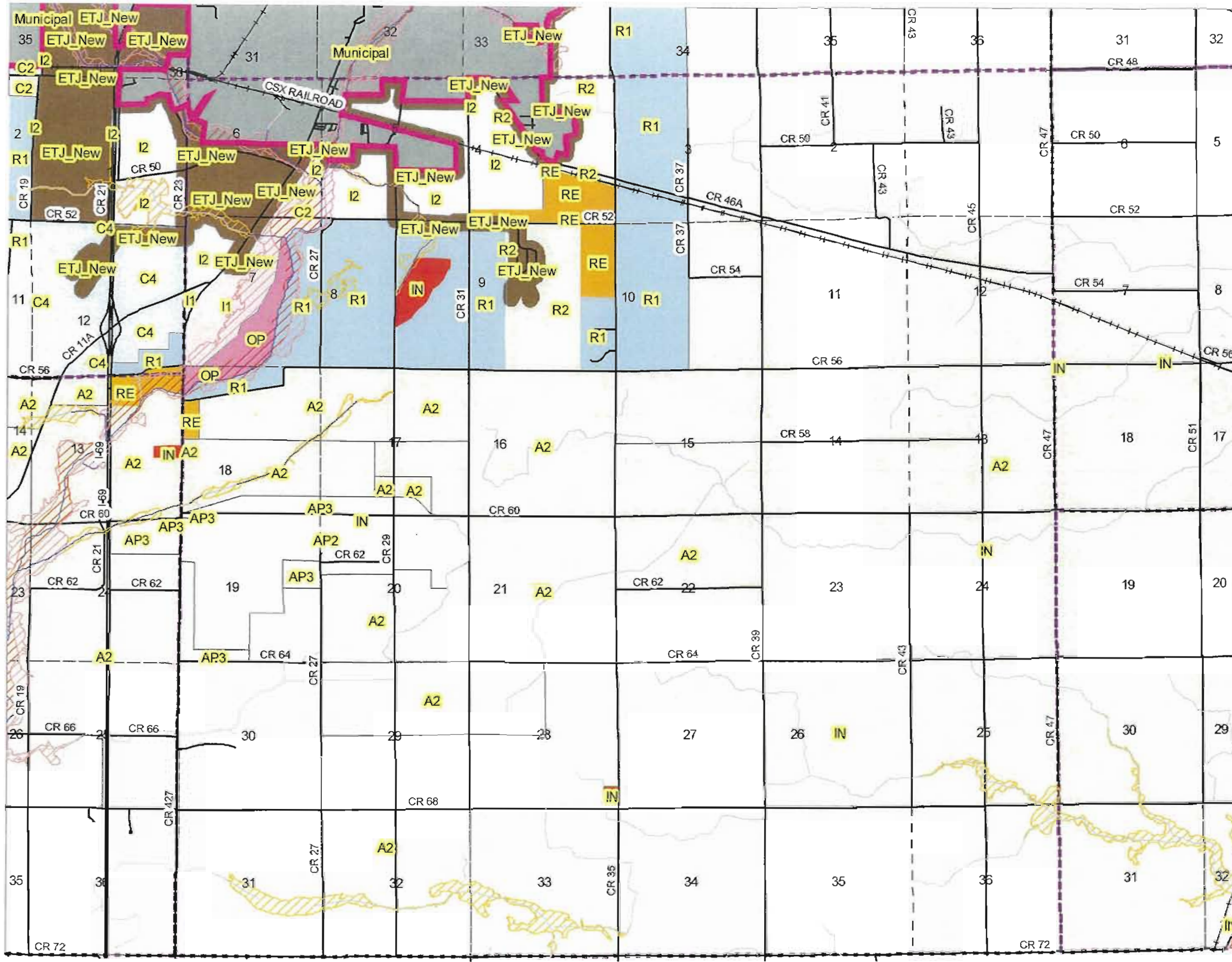


DeKalb County Zoning Map - Jackson Twp

This paper map is for reference purposes only. The Official Zoning Map is located on the County's GIS and is maintained by the DeKalb County Plan Commission as per the Unified Development Ordinance.



Map Authored by Brad Stump
DeKalb County GIS Department
Map Completed 11/17/2008



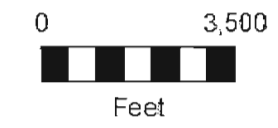
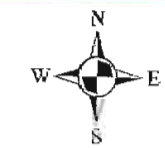
- | | |
|---------------|--|
| Zoning | Corporate Limits |
| A1 | Civil Townships Boundary |
| A2 | Alley |
| A3 | Road |
| A4 | Railroad Track |
| AP1 | PLSS First Divisions |
| AP2 | Small Stream/Creek |
| AP3 | River/Waterbody Centerline |
| C1 | Special Flood Hazard Area - By Zone & Floodway |
| C2 | Flood Zone w/ Floodway/Flood Fringe |
| C3 | AE, Floodway |
| C4 | AE, Flood Fringe |
| ETJ_New | A, No FW or BFE Determined |
| ETJ_Old | |
| H1 | |
| I1 | |
| I2 | |
| I3 | |
| IN | |
| M1 | |
| M2 | |
| MP | |
| Municipal | |
| OP | |
| R1 | |
| R2 | |
| R3 | |
| RE | |



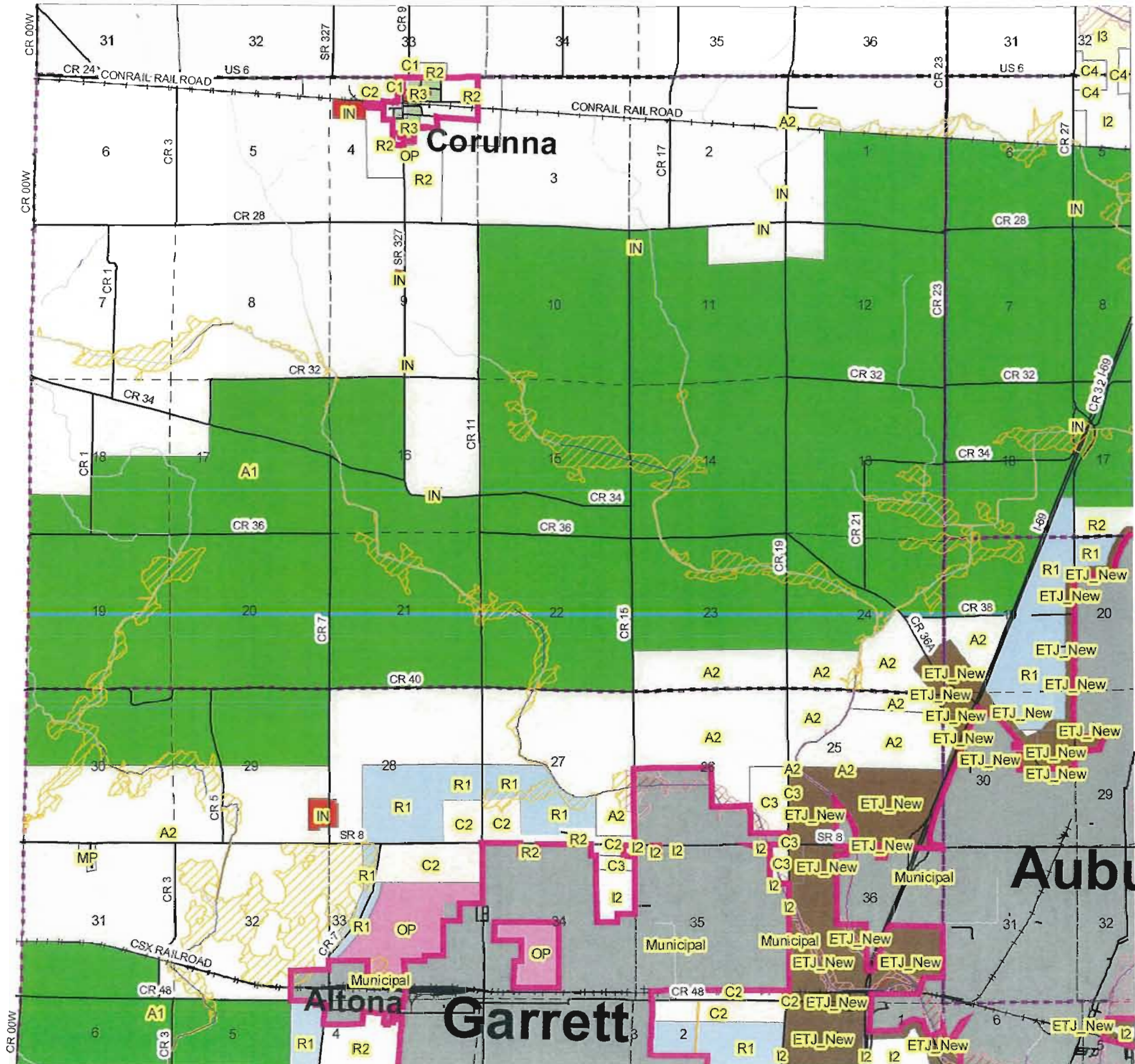
Document Disclaimer: CoCiGIS and/or its partnering agencies do not warrant or make any representation as to the quality, content, accuracy, or completeness of the information, text, graphics, links and other items contained on this document. The information and materials contained on this document have been compiled from a variety of sources and, as such, are subject to change without notice. In no event will CoCiGIS and/or its partnering agencies, or their officers, agents or employees, be liable for any damages, whether direct, indirect, general, consequential, incidental, exemplary or special arising from the use of information provided on this document. For more information, visit the CoCiGIS website at <http://www.coaurnbutgar.org/coicgis>.

DeKalb County Zoning Map - Richland & N Keyser Twp

This paper map is for reference purposes only. The Official Zoning Map is located on the County's GIS and is maintained by the DeKalb County Plan Commission as per the Unified Development Ordinance.



Map Authored by Brad Stump
DeKalb County GIS Department
Map Compiled 11/12/2008



- Zoning**
 - A1
 - A2
 - A3
 - A4
 - AP1
 - AP2
 - AP3
 - C1
 - C2
 - C3
 - C4
 - ETJ_New
 - ETJ_Old
 - HI
 - I1
 - I2
 - I3
 - IN
 - M1
 - M2
 - MP
 - Municipal
 - OP
 - R1
 - R2
 - R3
 - RE
- Corporate Limits
 - Civil Townships Boundary
 - Alley
 - Road
 - Railroad Track
 - PLSS First Divisions
 - Small Stream/Creek
 - River/Waterbody Centerline
 - Special Flood Hazard Area - By Zone & Floodway
 - Flood Zone w/ Floodway/Flood Fringe
 - AE, Floodway
 - AE, Flood Fringe
 - A, No FW or BFE Determined



Document Disclaimer: CoCiGIS and/or its partnering agencies do not warrant or make any representations as to the quality, content, accuracy, or completeness of the information, text, graphics, links and other items contained on this document. The information and materials contained on this document have been compiled from a variety of sources and, as such, are subject to change without notice. In no event will CoCiGIS and/or its partnering agencies, or their officers, agents or employees, be liable for any damages, whether direct, indirect, general, consequential, incidental, exemplary or special arising from the use of information provided on this document. For more information, visit the CoCiGIS website at <http://www.ci.auburn.in.us/cocigis>.