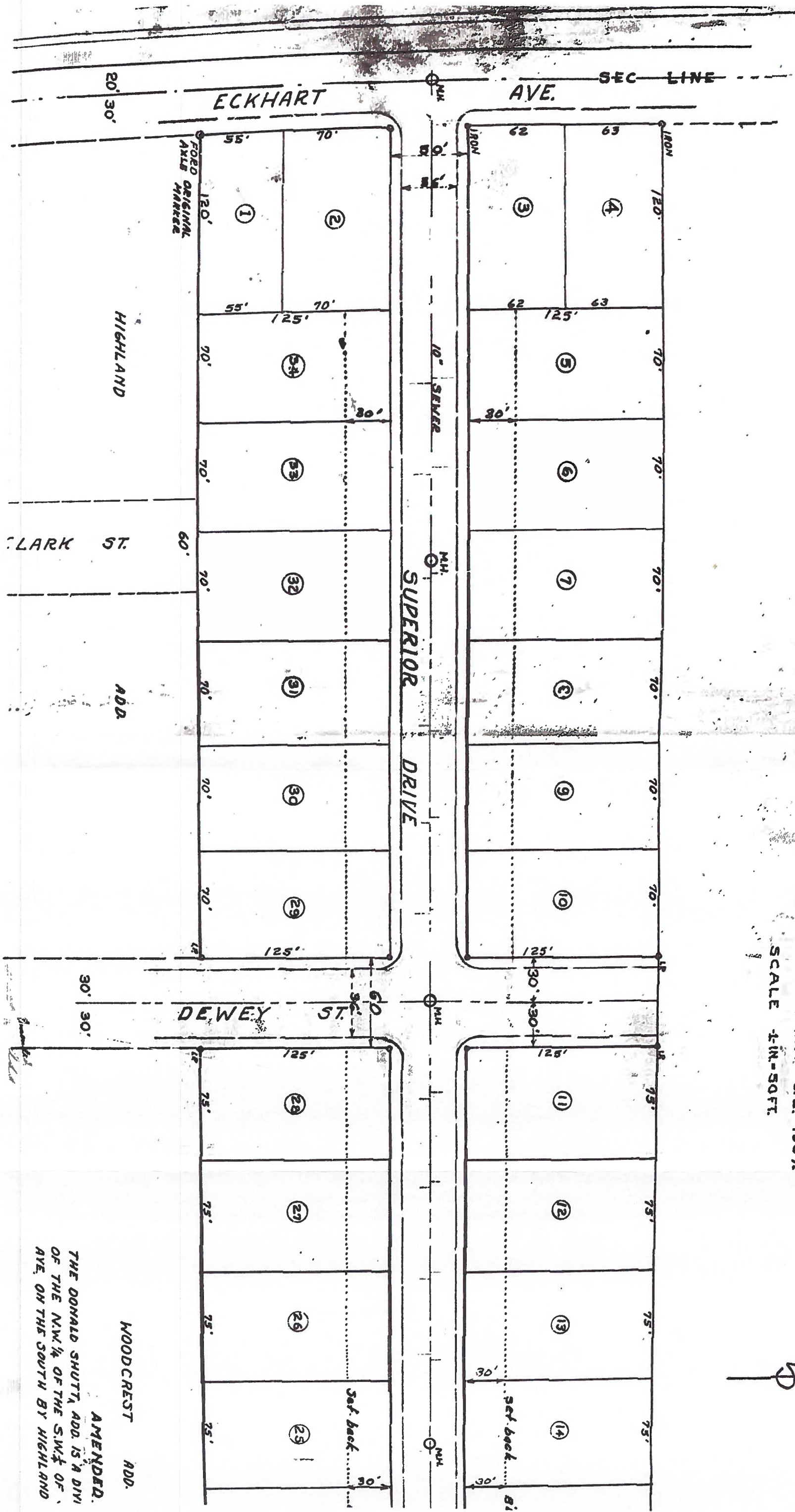


THE AMENDED DONALD SHUTT ADDITION
TO

AUBURN INDIANA.

WAYNE T. VANAUKEN C.E. 1957

SCALE 1/4"=50 FT.



WOODCREST ADD.
AMENDED.
THE DONALD SHUTT, ADD. IS A DIVI
OF THE NW 1/4 OF THE SW 1/4 OF
AVE. ON THE SOUTH BY HIGHLAND

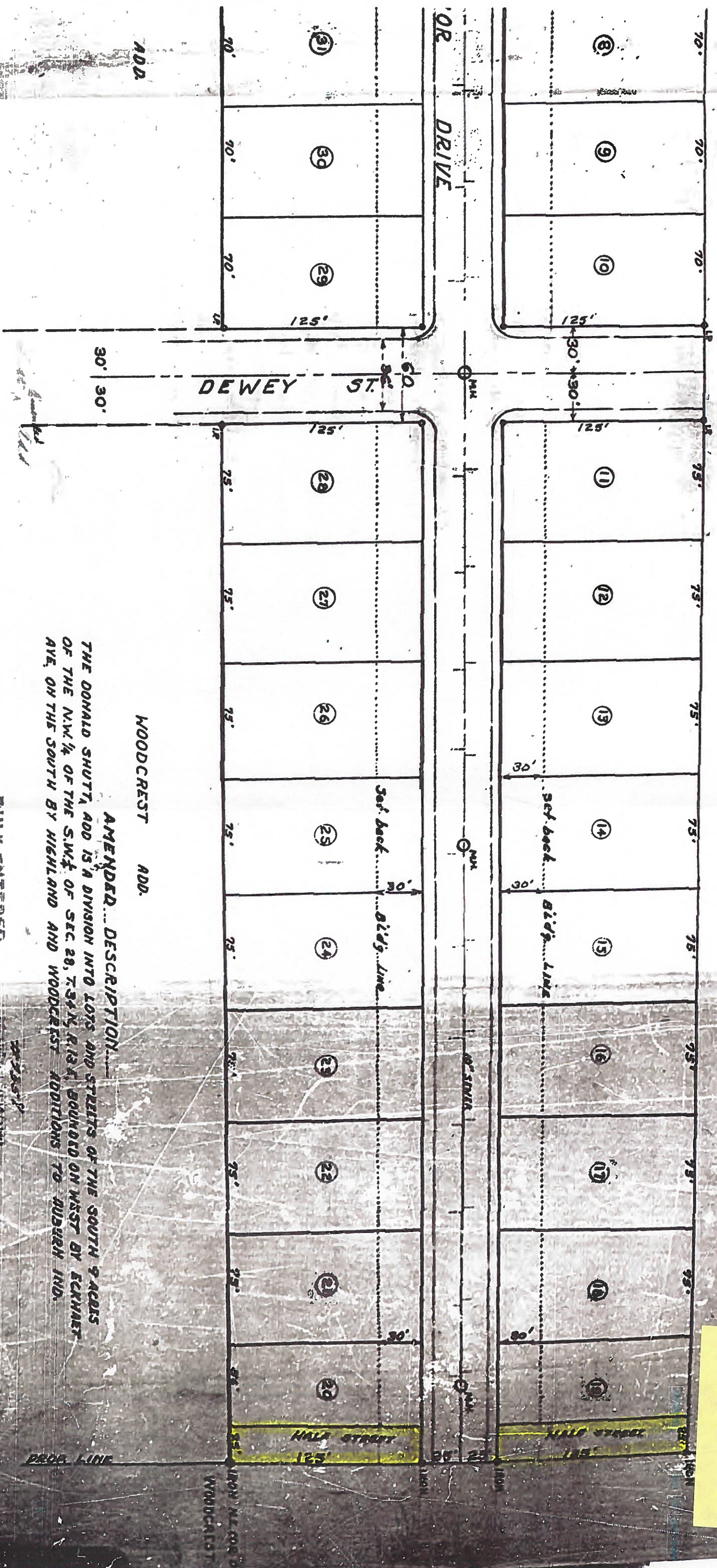
Drawn 8

AUBURN INDIANA.

WAYNE T. VANAUKEN C.E. 1957

SCALE 1/4"=50 FT.

6



WOODCREST ADD.

AMENDED... DESCRIPTION...
THE DONALD SHUTTA ADD IS A DIVISION INTO LOTS AND STREETS OF THE SOUTH 9 ACRES OF THE N.W. 1/4 OF THE S.W. 1/4 OF SEC. 28, T.34 N., R.13 E., BOUND ON WEST BY ECKHAET AVE. ON THE SOUTH BY HIGHLAND AND WOODCREST ADDITIONS TO AUBURN IND.

DULY ENTERED FOR TAXATION
AUG 27 1957

RECEIVED BY THE RECORDS AND RETURNED TO THE COUNTY CLERK IN AUBURN INDIANA
AUG 28 1957

Blair J. Cyprien

Wayne T. Vanauken